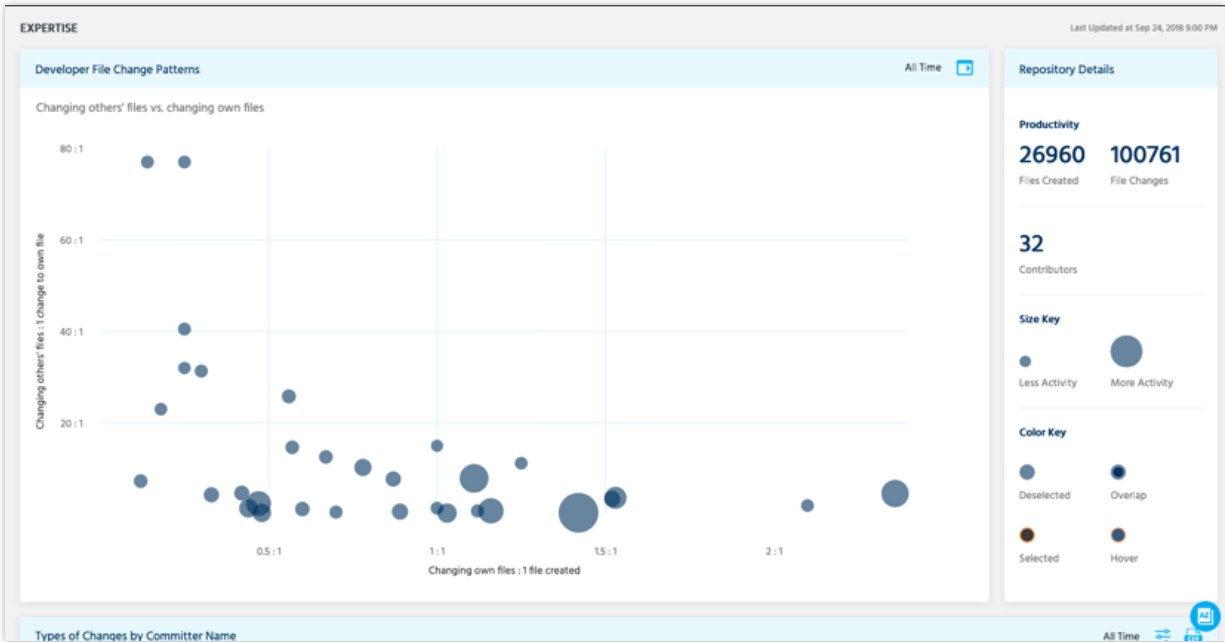


Development Partner Evaluation

Gain unprecedented insight into your development partners.

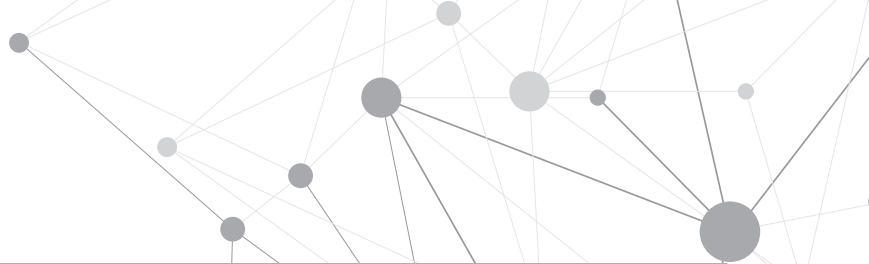
Working with third-party developers can feel like a black box: you can't tell if the code is up to par, it's unclear who is doing the work, and the development processes may or may not match the vendor's commitments. Sema closes the transparency gap between you and your development partners. All the data you need is in one centralized dashboard, making it easy for you to check-in daily, audit a specific project, or strategically assess the vendor's contributions and contract.

Sema lets you visualize your development partners' code quality, developer contributions, and process quality through our SaaS platform. In addition, Sema's Professional Services team can deliver a customized *Health Check* report that summarizes vendor quality, and provides strategic and actionable recommendations aligned to your business objectives.



Understand your third-party teams

Gain insight into how your third-party teams really work. See how often developers are committing code, which developers have the expertise on your projects, and how the team has changed over time. Get the data you need to make the most of in-person interviews and development partner check-ins, and maximize the value of your contracts.

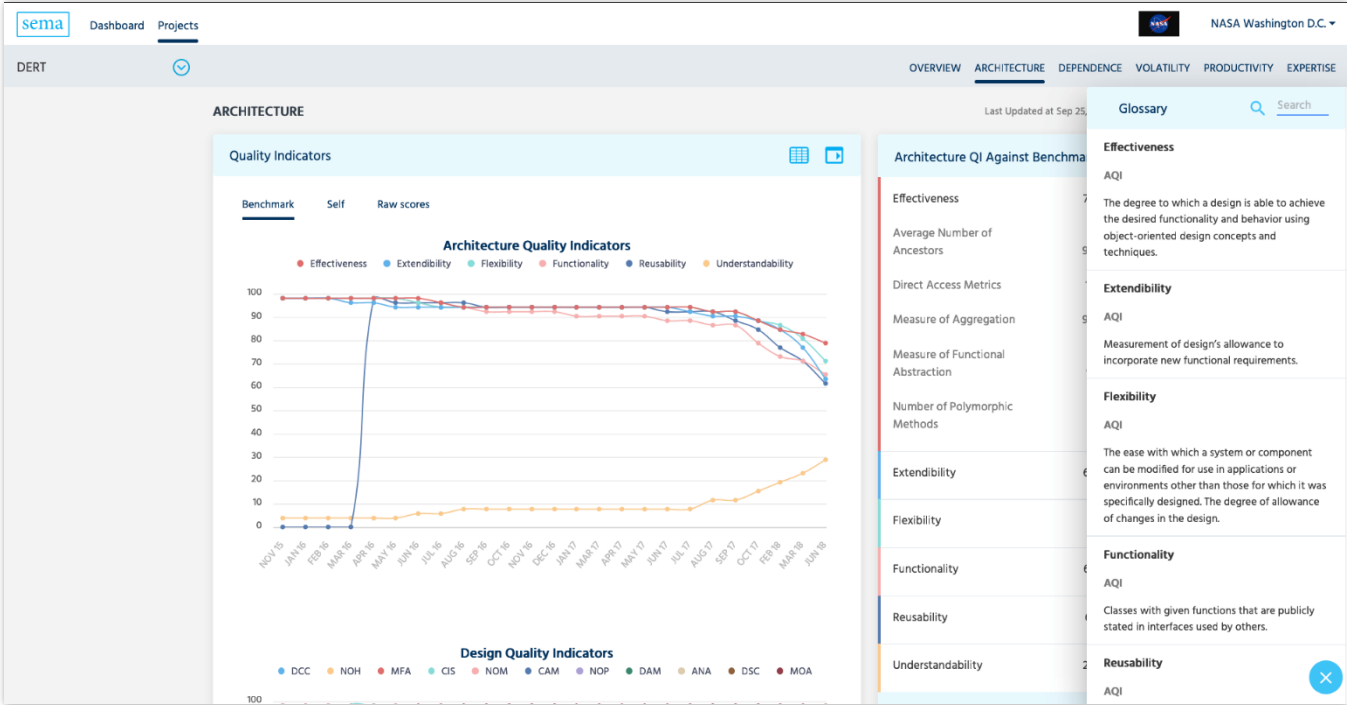


committer_name	Architectural Quality			Line quality			Contribution			Expertise	
	Effectiveness	Extendibility	Under-standability	Misleading	Smell	Stylistic	First Commit Count	changes_to_other_code_perc_of_initial	changes_to_own_code_perc_of_initial	Expertise per major repo	Total expertise
Developer A	Developer A	Developer A	Developer A	Developer A	Developer A	Developer A	Developer A	Developer A	Developer A	Developer A	0.001
Developer B	1.44	3.25	(158.95)	(0.88)	(0.37)	(0.72)	357	2045	1101	0.062	0.004
Developer C	1.42	3.00	(16.37)	(0.78)	(0.74)	(0.20)	60	155	355	0.071	0.003
Developer D	0.39	0.96	(2.71)	(0.80)	(0.93)	(0.94)	3	42166	200	0.062	0.002
Developer E	0.00	0.02	(1.32)	(0.89)	(0.51)	(0.32)	11	627	181	0.049	0.006
Developer F	0.01	0.03	(0.38)	(0.20)	(0.49)	(0.74)	0	100	0	0.000	0.000
Developer G	0.05	0.12	(10.41)	(0.95)	(0.37)	(0.47)	15	186	293	0.001	0.000
Developer H	0.01	0.02	(4.34)	(0.71)	(0.39)	(0.42)	14	1435	242	0.003	0.000
Developer I	(0.21)	(0.50)	(4.23)	(0.47)	(0.25)	(0.27)	42	1523	491	0.068	0.004
Developer J	0.37	0.81	(49.23)	(0.40)	(0.55)	(0.85)	46686	473	640	0.371	0.021
Developer K	0.00	0.02	(0.02)	(0.25)	(0.20)	(0.53)	8	100	250	0.043	0.003

Developer Coaching Grid

Development initiatives frequently switch between in-house and outsourced, and between onshore, nearshore, and offshore. Sema helps you manage these transitions effectively by giving you a full picture of your third-party development teams.

Our Developer Coaching Graph has 35 categories of metrics and is tunable for your organizational needs, so you can identify critical team members and knowledge gaps and develop an informed, metrics-driven approach to project changeovers.



Monitor Code Quality

Create a more complete partner assessment by measuring quality of their code output. Sema provides an executive-level view of code quality without having to review every commit. Architectural Quality Indicators and line-level warnings

combine to provide potent insights about your codebase. Know the quality of the code third-party developers are producing and be able to track it over the lifetime of the project to gain a better picture of the state of your code.